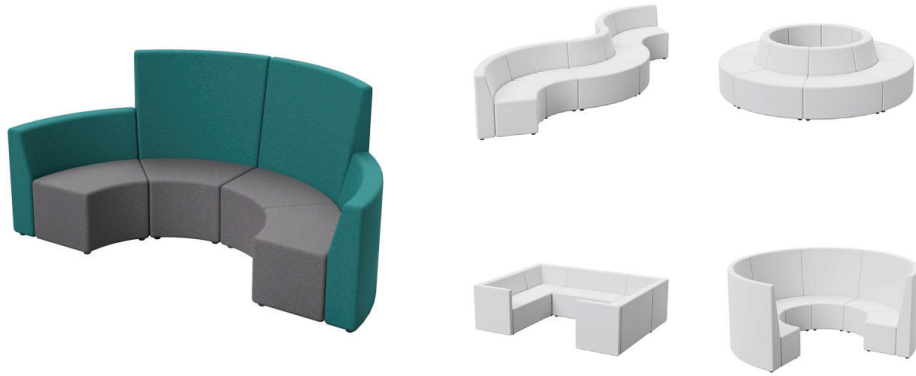


# ARC MODULAR LOUNGE

## PRODUCT SPECIFICATION



Arc modular lounge delivers flexible, space-saving comfort with linear, curved, and corner modules for limitless layouts. Create a gathering space, peaceful retreat, or dynamic seating - Arc adapts effortlessly to any environment. The tall module

doubles as a room divider, while ottomans add even more versatility. Proudly Australian-made and Geca Certified with local materials for world-class quality and sustainability.

### STANDARD FEATURES

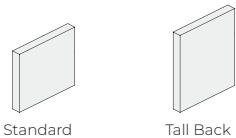
- Timber frame
- Standard or tall backrest
- Large selection of modular pieces
- Australian made fire retardant foam
- Non-removable cushions
- Upholstered seat & backrest
- Glide feet - for durability
- Ability to add rear bench to lounge
- Acoustic dampening properties
- Made to order in any local fabric
- Lead time 3-6 weeks
- Geca Certified
- 10-year warranty
- Made in Australia

REFER TO PAGES 23-25 FOR THE FULL F/L/V RANGE

### OPTIONS AVAILABLE

- 1, 2, 3 Seaters, ottoman, corner pieces & curved pieces
- Upholstery in any local fabric
- Standard backrest (780mm high)
- Tall backrest (1200mm high)

### ARMREST SIZING GUIDE



### SIZING GUIDE

- Armrest to suit Standard Back (780H) 90mm
- Armrest to suit Tall Back (1200H) 90mm

	OVERALL WIDTH	OVERALL DEPTH	OVERALL HEIGHT	REQUIRED FABRIC
· Armrest to suit Standard Back (780H)	90mm	710mm	780mm	1.6m
· Armrest to suit Tall Back (1200H)	90mm	710mm	1200mm	1.6m

### DIRECT ERGONOMICS

SYDNEY | MELBOURNE | CANBERRA

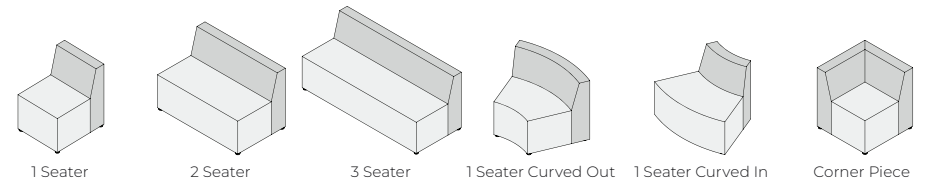
T: 02 8437 5400 | W: WWW.DIRECTERGO.COM.AU | E: SALES@DIRECTERGO.COM.AU

# ARC MODULAR LOUNGE

## PRODUCT SPECIFICATION

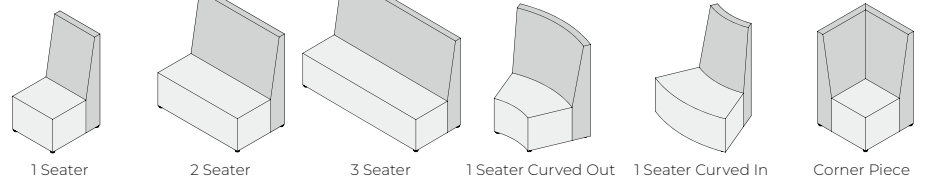


### STANDARD BACK



	OVERALL WIDTH	OVERALL DEPTH	OVERALL HEIGHT	SEAT WIDTH	SEAT DEPTH	HEIGHT	BACK HEIGHT	REQUIRED FABRIC
· 1 Seater	600mm	710mm	780mm	600mm	500mm	450mm	330mm	3.2m
· 2 Seater	1200mm	710mm	780mm	1200mm	500mm	450mm	330mm	3.9m
· 3 Seater	1800mm	710mm	780mm	1800mm	500mm	450mm	330mm	5.1m
· 1 Seater Curved Out	1045mm	710mm	780mm	1045mm	500mm	450mm	330mm	4.5m
· 1 Seater Curved In	1045mm	710mm	780mm	1045mm	500mm	450mm	330mm	3.8m
· Corner Piece	710mm	710mm	780mm	710mm	500mm	450mm	330mm	4.0m

### TALL BACK



	OVERALL WIDTH	OVERALL DEPTH	OVERALL HEIGHT	SEAT WIDTH	SEAT DEPTH	HEIGHT	BACK HEIGHT	REQUIRED FABRIC
· 1 Seater	600mm	710mm	1200mm	600mm	500mm	450mm	750mm	4.2m
· 2 Seater	1200mm	710mm	1200mm	1200mm	500mm	450mm	750mm	5.6m
· 3 Seater	1800mm	710mm	1200mm	1800mm	500mm	450mm	750mm	7.4m
· 1 Seater Curved Out	1045mm	710mm	1200mm	1045mm	500mm	450mm	750mm	5.0m
· 1 Seater Curved In	1045mm	710mm	1200mm	1045mm	500mm	450mm	750mm	3.8m
· Corner Piece	710mm	710mm	1200mm	710mm	500mm	450mm	750mm	5.3m

### OTTOMAN SIZING GUIDE



	SEAT WIDTH	OVERALL WIDTH	OVERALL DEPTH	OVERALL HEIGHT	REQUIRED FABRIC
· Straight	600mm	600mm	710mm	450mm	2.5m
· 45 Degree	1080mm	1080mm	710mm	450mm	3.2m
· 90 Degree	2010mm	2010mm	710mm	450mm	4.9m